

Summer cottage sauna floor 5 m² | Miehikkälä, Finland



Description

The floor of the sauna in the summer cottage had already been tiled for some time. The old tiles were removed and the Finnish innovative, self-smoothing ElaProof FLOOR X floor covering was chosen as the new surface. After removing the tiles, the spills of the old concrete floor were repaired with UZIN products and after drying, the floor was treated with ElaProof Primer. The treatment improves the adhesion of ElaProof to the substrate and blocks the pores of the substrate. ElaProof FLOOR X was installed as a new floor coating according to the work instructions. The easy-care and finished surface was made with ELACOAT TopCoat RAL topcoat.

Information

A summer cottage built at the end of the 1960s, without electricity, which is cold in winter, where it was decided to renew the sauna floor. The sauna was last renovated in the early 2000s, when the painted concrete floor was tiled with ceramic tiles. In connection with the floor renovation, the brick chimney of the sauna was coated with ElaProof+SAND Wall coating.

Project information

Client: Private summer cottage

Project: Sauna floor of summer cottage

Address: Miehikkälä

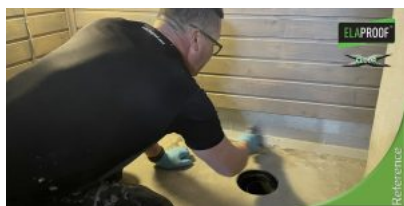
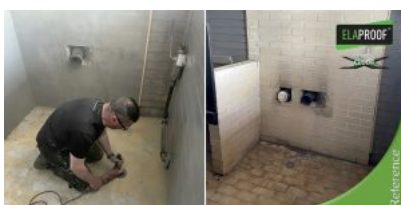
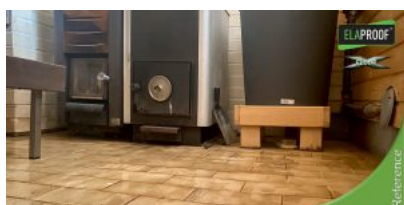
Material: concrete

Contractor: Build Care Oy, reference

Time and city: 06/2023 | Miehikkälä, Finland

Products used in the project

- [ElaProof Primer](#)
- [ElaProof FLOOR X](#)
- [ELACOAT TOPCOAT RAL](#)



All the information presented above is based on research results, our current knowledge and experience. They do not remove the responsibility of the user of the product to carry out his own tests and experiments, so that all factors and conditions that may affect the installation and use of the products should be considered. No guarantees regarding the properties or suitability of the product for specific purposes can be given based on this information. All descriptions, drawings, photos, information, proportions, portion sizes, weights, etc. are indicative. We are not responsible if the product is used contrary to the instructions presented here. It is the responsibility of the user of the product to test the suitability of the product for the purpose of use. We are only responsible for the quality of the product and guarantee that it will pass our critical quality control. Product information is updated regularly, however, it is the user's responsibility to obtain the latest valid product information, which can be found at www.elaproof.com. We reserve the right to make changes. © Build Care Oy